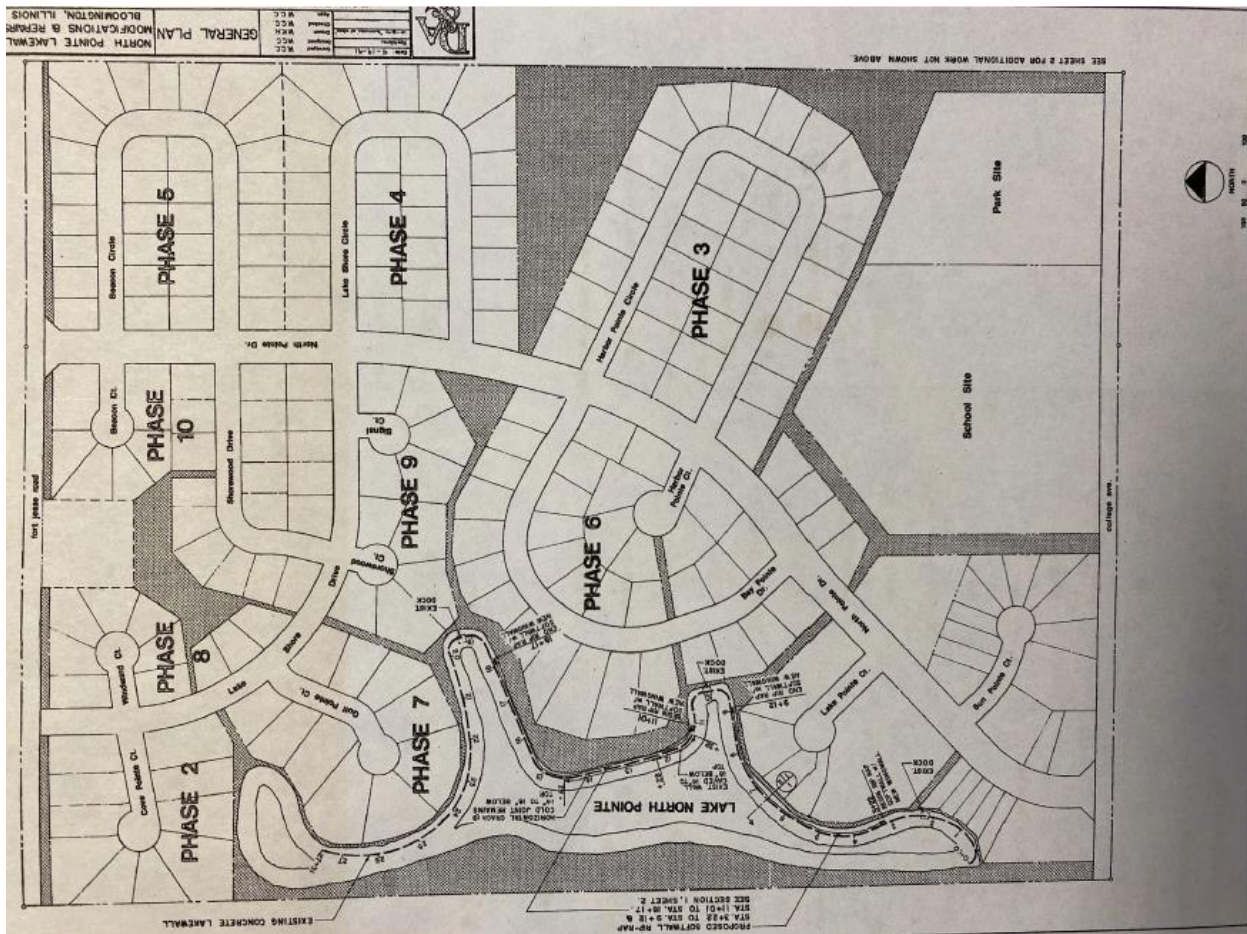


## EXHIBIT A

The Association is comprised of all of the lots and property in the image below and contained in North Pointe Plats recorded in McLean County, Illinois as follows:

Plat \_ doc no. 83-11893,  
Plat \_ doc no. 85-4721,  
Plat \_ doc no. 86-5687,  
Plat \_ doc no. 86-9608,  
Plat \_ doc no. 86-19060,  
Plat \_ doc no. 87-5048, and  
Plat \_ doc no. 87-10197.



### Summary Note:

For a more comprehensive and detailed understanding of the rules and regulations, it is always recommended to refer to the official documentation provided by the NPPOA or

contact a member of the North Pointe Property Owners Association. They will have the most up-to-date and accurate information regarding the specific rules and regulations for your community.

Additionally, if you are a condominium owner, it is advisable to reach out to your individual condominium association for any specific guidelines or regulations that may apply to your unit.

By consulting the official documentation and communicating with the relevant associations, you can ensure that you have the most accurate and detailed information regarding the rules and regulations of the NPPOA and your individual condominium association.